

Periodic Inspection

Liko™ accessories



3EN601001 Rev. 2

Valid for Liko™: Bathing Chairs, Scales, SlingBars, Stretchers and Transfer Motors.

Lift information		Customer reference	
Product:		Agreement No:	
Product Number:		Name:	
Serial Number:		Address:	
Production year:		Post Code	

△ Liko™ accessories must be thoroughly inspected at least once per year. Inspection and service must be carried out by Hill-Rom authorized personnel. If the accessory is installed in a corrosive environment such as indoor pool or bathroom, see inspection point 6 before starting inspection.

NOTE! For inspection of the rail system, use Periodic Inspection Liko™ overhead rail system (3EN111001)

Periodic Inspections are available for: Liko™ Overhead Lifts (3EN191001), Overhead Rail System (3EN111001), Freestanding Systems (3EN301001) and Mobile Lifts (3EN371001).

If printed: Make a colour print of this instruction.

Accessories		N/A	Action required:	Approved	Not approved
1	Bathing Chair				
2	Scale Date of latest calibration:				
3	SlingBar				
4	Stretcher				
5	Transfer Motor				
ENVIRONMENTAL IMPACT		N/A	Action required:	Approved	Not approved
6	Corrosive environments				

Inspection sign off

Complete inspection according to the instructions (page 2-5), fill in this page and sign below.

Approval to use the accessory: Approved Not approved

If the accessory has one or more inspection points "Not approved", the product must not be used.

Action required: Actions according to the inspection items "NOT APPROVED" should be performed immediately. After performed actions sign below. If anything is unclear or if you have questions, please contact Hill-Rom or your local Hill-Rom representative. Contact information is to be found at www.hill-rom.com.

Inspection performed by:		Date:	
Next inspection:			

Inspection performed in accordance with ISO 10535:2006 Annex B- Periodic inspection

Enhancing outcomes for patients and their caregivers:



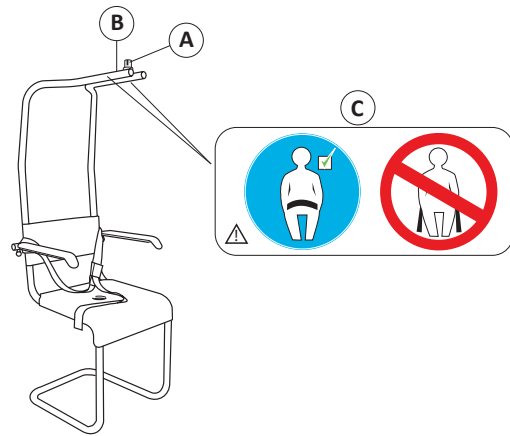
Instructions for the check points

Liko™ accessories

⚠ In this document, this warning symbol indicates that special care should be taken. If instructions are not followed there is a risk of serious injury.

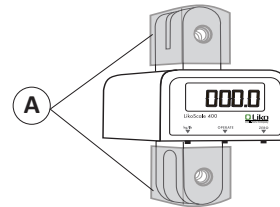
1 Bathing Chair

- Make sure there are no deformities in the attachment points (A).
- Verify presence of Product Decal (B) with model type and serial number and maximum load if applicable.
- Verify presence of Safety Belt Label (C)
- Check for scratches, dents, sharp edges, deformities or unusual surface wear.
- Verify that the protective covers are secure.
- Check plastic covers for cracks.
- Verify functionality of the Safety Belt.



2 Scale

- Verify presence of Product Decal with model type, serial number and maximum load.
 - Make sure there are no deformities in the attachment points.
 - Check for scratches, dents, sharp edges, deformities or unusual surface wear.
 - Verify that the protective sleeves (A) are available and without cracks. Make sure the sleeves are correctly mounted according to valid User Manual.
- NOTE:**
If available, write down latest date of calibration.



3 SlingBar

- Verify presence of Product Decal with model type and serial number and maximum load.
- Visually inspect the sling bar to detect any cracks or deformities.
- Make sure there are no deformities in the attachment points (A).

SlingGuard™

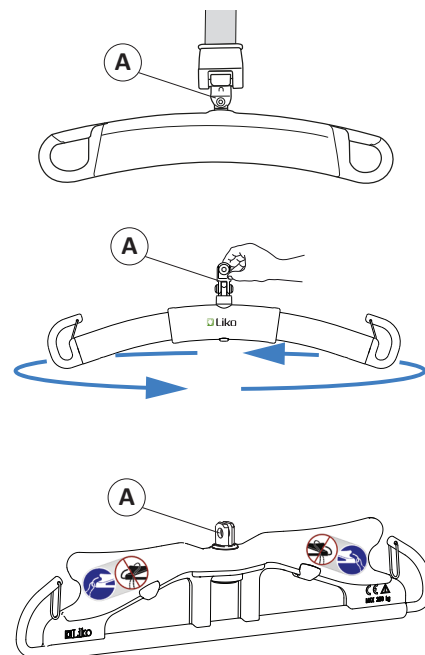
- Check that the unit rotates freely on its bearings.
- Make sure the spring function on the latches are working. The latches on the SlingGuard should still be locked in place while the SlingGuard is held upside down.

Universal SlingBar

- Check that the unit rotates freely on its bearings. Make sure the sling bar doesn't rotate unevenly, wobble or the spinning stops due to high friction.
- Make sure that both latches are mounted and fall back against the body of the sling bar.
- Check that the sling bar is correctly fastened.

SlingBar Standard

- Verify that the o-ring is present and positioned in the center bolt groove.
- Check that the unit rotates freely on its bearings.
- Make sure that both latches are mounted and fall back against the body of the sling bar.
- Make sure the SlingBar cover is attached to the sling bar.

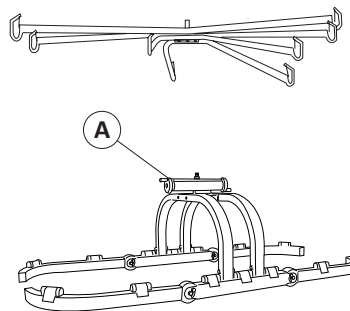


Instructions for the check points

Liko™ accessories

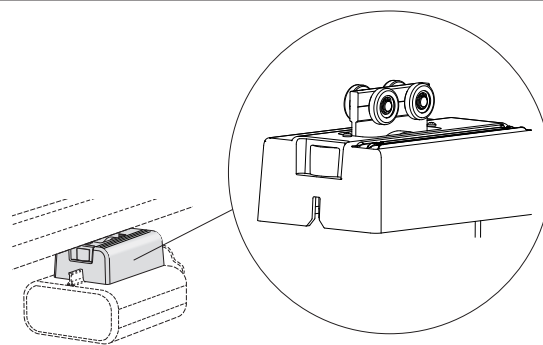
4 Stretcher

- Verify presence of Product Decal with model type and serial number and maximum load.
- Make sure there are no deformities in the attachment points.
- Check for scratches, dents, sharp edges, deformities or unusual surface wear on frames and plastic covers.
- Verify that the protective covers are secure.
- Make a functional check of the Stretch leveller (A).



5 Transfer Motor

- Verify presence of Product Decal with model type and serial number and maximum load if applicable.
- Make sure there are no deformities in the attachment points.
- Check for scratches, dents, sharp edges, deformities or unusual surface wear.
- Verify that the protective covers are secure.
- Check plastic covers for cracks
- Make a functional check of the Transfer Motor.



Instructions for the check points

Liko™ accessories

6 Environmental Impact – corrosive environments

Due to the environment an overhead system is installed in, components may be subject to corrosion. High temperature, high relative humidity, poor ventilation, presence of chlorine and different combinations of these factors, will affect the corrosion rate. Depending on material type a corrosion attack can occur suddenly or in other cases form gradually. The corrosion rate and type of corrosion attack might be different in one area of the installation compared to another.

△ Fixing points classified as safety critical, installed in a corrosive environment such as indoor pool or bathroom, must be inspected. When a component has reached a certain stage of corrosion it might need to be replaced.

Note! Print out in color.

Check for visible severe corrosion and material loss and identify if components need to be replaced.

Galvanized steel

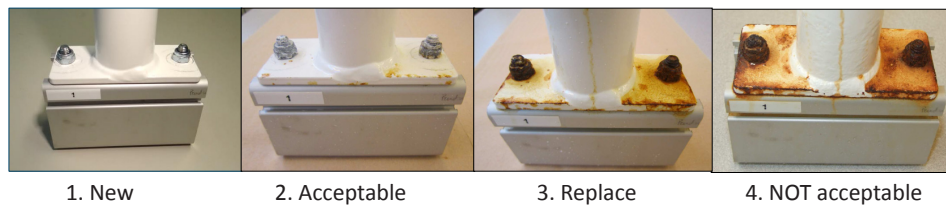
These pictures describes the evaluation method for all galvanized steel components.



1. A galvanized steel component.
2. White rust on a component appears when the surface treatment corrodes.
3. Red rust appears when the actual steel has started to corrode. Corroding steel will result in material loss and should therefore be replaced.
4. A component covered in red rust is unfit for use.

Powder coated steel

These pictures describes the evaluation method for all powder coated steel components.



1. A powder coated steel component.
2. Local discoloration may occur in close proximity to corroding non-painted components. Stains on the painted surface is acceptable.
3. Cracks in the paint and red corrosion under the paint is a sign of corroding steel. Corroding steel will result in material loss and should therefore be replaced.
4. A component with peeling coating, bubbles in the paint and red corrosion under the paint is unfit to use.

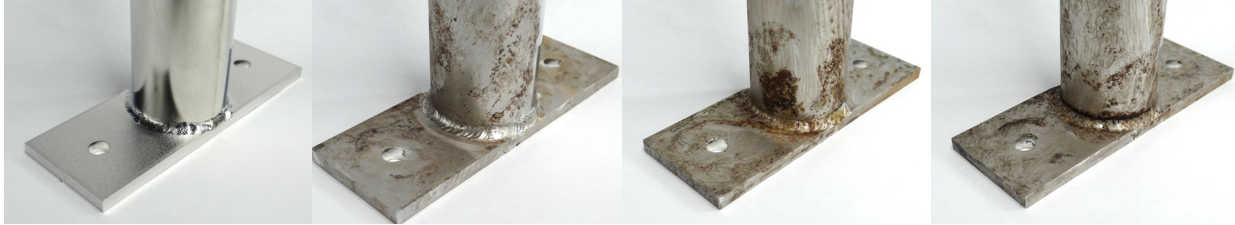
Instructions for the check points

Liko™ accessories

11 Environmental Impact – corrosive environments, cont.

Stainless steel

These pictures describe the evaluation method for all stainless steel components.



1. New

2. Acceptable

3. Replace

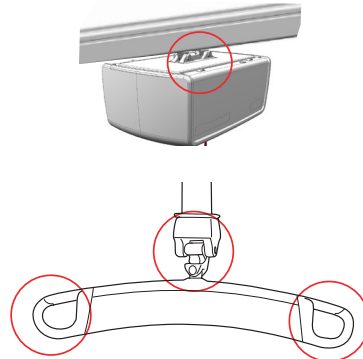
4. NOT acceptable

1. A stainless steel component.
2. Local discoloration may occur on stainless steel components. Minor stains on stainless steel surfaces NOT in the direct proximity of welds are acceptable.
3. Discoloration of stainless steel surfaces in the direct proximity of a weld might be an indication of Intergranular Corrosion. Corrosion will lead to material loss and the component should therefore be replaced.
4. A stainless steel component with visible cracking, gouging or extensive corrosion in the direct proximity of a weld is unfit to use.

Safety critical fixing points:


- Carrier bolts and pins
- Load bearing components below lift motor.

Example of load bearing parts:





www.hill-rom.com | www.liko.com

 Liko AB
Nedre vägen 100
SE-975 92 Luleå , Sweden

Enhancing outcomes for
patients and their caregivers: 